



Hospitality Value Series LED HDTV

32" LED Model J32LV840
40" LED Model J40LV840



Anti-Theft
Base



Pro Idiom
MPEG4



Adjustable
Swivel Base



Volume
Limiter



IR
Pass-thru



USB Clone
Programming



Commercial
Interface



Eco-
Friendly



2-Year
Replacement



Ad
Splash

SPECIFICATIONS

J32LV840 - 32" LED HDTV

Cabinet Color	brush black
Screen Size	32" diagonal
Display Resolution	1366 x 768
Brightness (typical)	300 cd/m2
Viewing Angle	176° x 176°
Response Time (typical)	8 ms
Broadcast System	NTSC/ATSC/QAM
Max Audio Output	2 x 8 W
VESA Standard	200 x 200 mm
Pro:Idiom / MPEG-4	Yes
Power Supply	AC 100-240V 60Hz
Power Consumption	<38 W
Standby Consumption	<1 W
TV & Stand (W x H x D)	29.1 x 19.2 x 8.1"
TV w/o Stand (W x H x D)	29.1 x 17.4 x 3.5"
Set Weight	12.4 lbs.
Shipping Weight	16.8 lbs.

Commercial Features

Ultra-Slim Bezel	New thin bezel with reduced weight.
Channel Labeling	Allows channels to have individual customized names
Initial Channel	Sets the input/channel for the TV to tune when turned on
Volume Limiter/Initial Volume	Sets the maximum and initial volume settings when the TV is turned on
USB Cloning Capable	Allows duplication of TV configuration for easy installation
Ad \$plash	Display short advertisements on TV based on schedule settings
Master & Guest Remotes	Separate remotes for configuration and operation
Front Panel/Menu Lockout	Disables front panel and menu controls
Power On/Off Scheduler	Sets recurring time for the TV to power on and off
Energy-Saving Features	Auto power-off, less than 1 watt in standby mode, low power LED, no signal power-off
VESA Mount Pattern	Wall mount your TV using standard mounts
IR Pass-Thru	Allows control of an external device without the need for direct line of sight
Bed 1/2/3 Capable	Allows simultaneous control of multiple TVs in the same room without remote interference

J40LV840 - 40" LED HDTV

Cabinet Color	brush black
Screen Size	39.5" diagonal
Display Resolution	1920 x 1080
Brightness (typical)	300cd/m2
Viewing Angle	176° x 176°
Response Time (typical)	8.5 ms
Broadcast System	NTSC/ATSC/QAM
Max Audio Output	2 x 10 W
VESA Standard	200 x 200 mm
Pro:Idiom / MPEG-4	Yes
Power Supply	AC 100-240V 60Hz
Power Consumption	<43 W
Standby Consumption	<1 W
TV & Stand (W x H x D)	36 x 23.3 x 8.8"
TV w/o Stand (W x H x D)	36 x 21.4 x 3.3"
Set Weight	20.1 lbs.
Shipping Weight	24.6 lbs.

Antenna/Cable Merge	Ability to merge antenna and cable channels into a single channel line-up
Auto Detect Side AV	Allows users to easily connect peripheral devices to side input without use of remote
Last Power Mode	Selectable power state of the TV after a power outage

Accessories

User Remote (R230D1)	Included
Master Remote (R230D2)	Not Included (Optional)
Direct TV DRE Kit	Not Included (Optional)
Anti-Theft Swivel Stand	Included
Security Lock Kit	Included

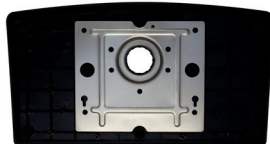
Certifications

FCC, RoHS, UL, CEC	Yes
--------------------	-----

Service/Limited Warranty

Limited Warranty	One-Year replacement, provides for minimal downtime by offering advance replacement shipping instead of on-site repair
------------------	--

Note: Features and specifications are subject to change without notice.



Anti-Theft Base



Swivel Base Design

